

Standalone Scheduler Property File Creation  
Oracle Banking Payments  
Release 14.3.0.0.0  
[May] [2019]



---

# Table of Contents

- 1. CREATING PROPERTY FILE FOR STANDALONE SCHEDULER..... 1-1**
- 1.1 INTRODUCTION..... 1-1
- 1.2 CREATING PROPERTY FILE..... 1-1
  - 1.2.1 *Configuring Scheduler*..... 1-4
  - 1.2.2 *Setting Common Properties*..... 1-6
  - 1.2.3 *Setting EMS Properties*..... 1-15
  - 1.2.4 *Saving Property File*..... 1-20

---

# 1. Creating Property File for Standalone Scheduler

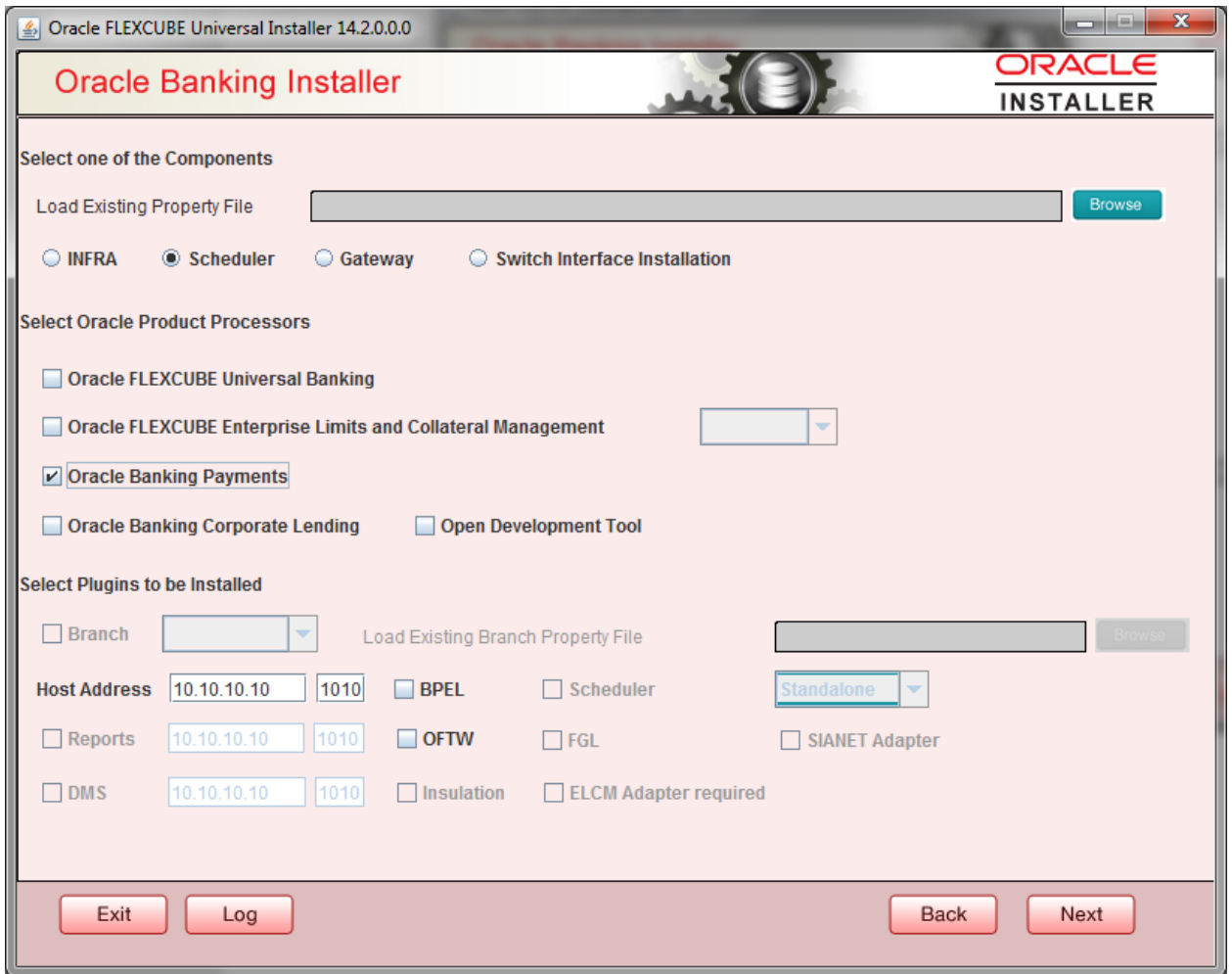
## 1.1 Introduction

This chapter explains the steps to create property file for Standalone Scheduler.

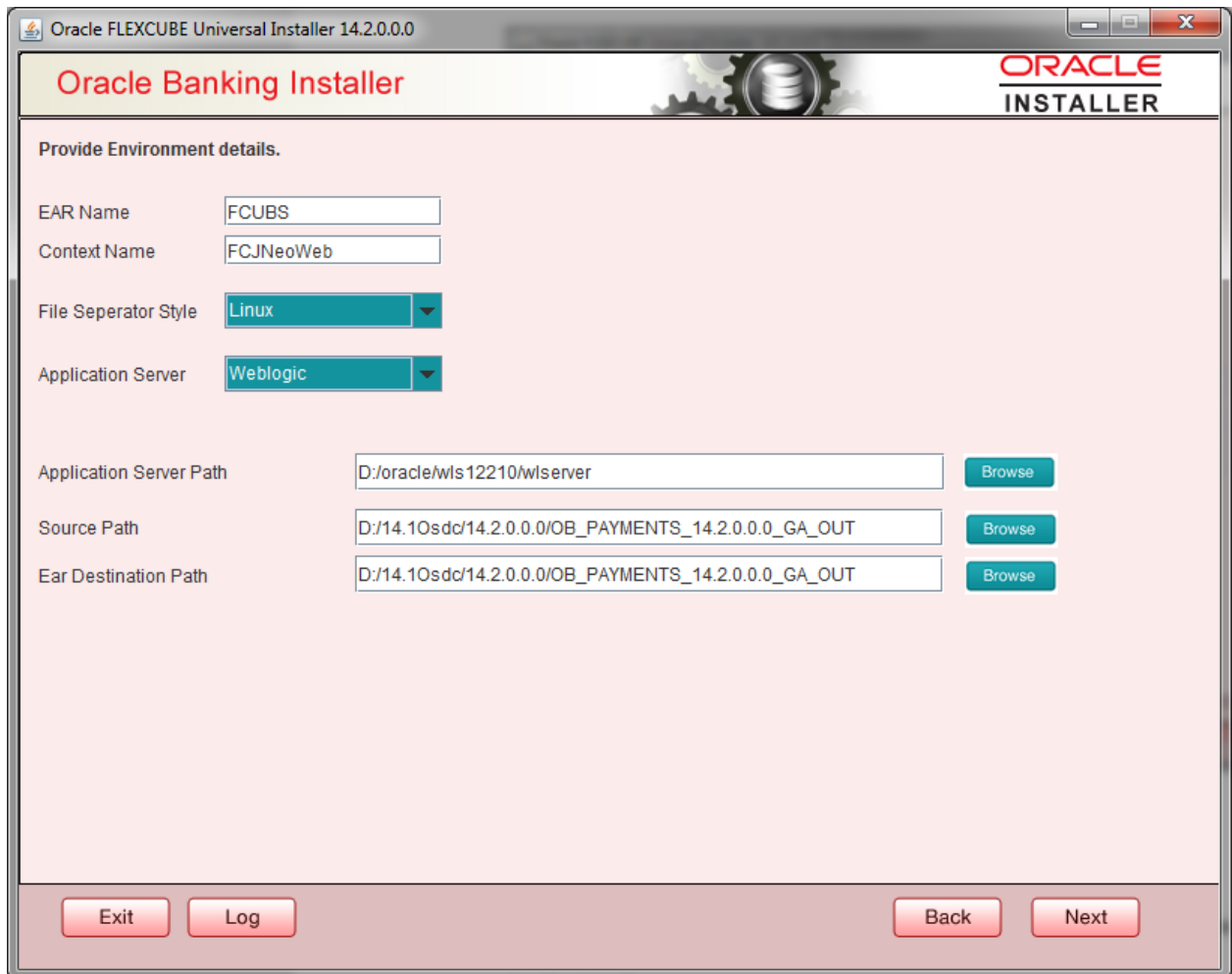
## 1.2 Creating Property File

To create the property file for Oracle Banking Payments, follow the steps given below:

1. Launch Oracle Banking Universal Installer.
2. Click 'Next' and the following screen is displayed.



3. Select 'Scheduler'.
4. Click 'Next' and the following screen is displayed:



5. Select 'Property File'.
6. Specify the following details:

### **Operating System**

Specify the operating system in which you are creating the property file. Select the appropriate one from the adjoining drop-down list.

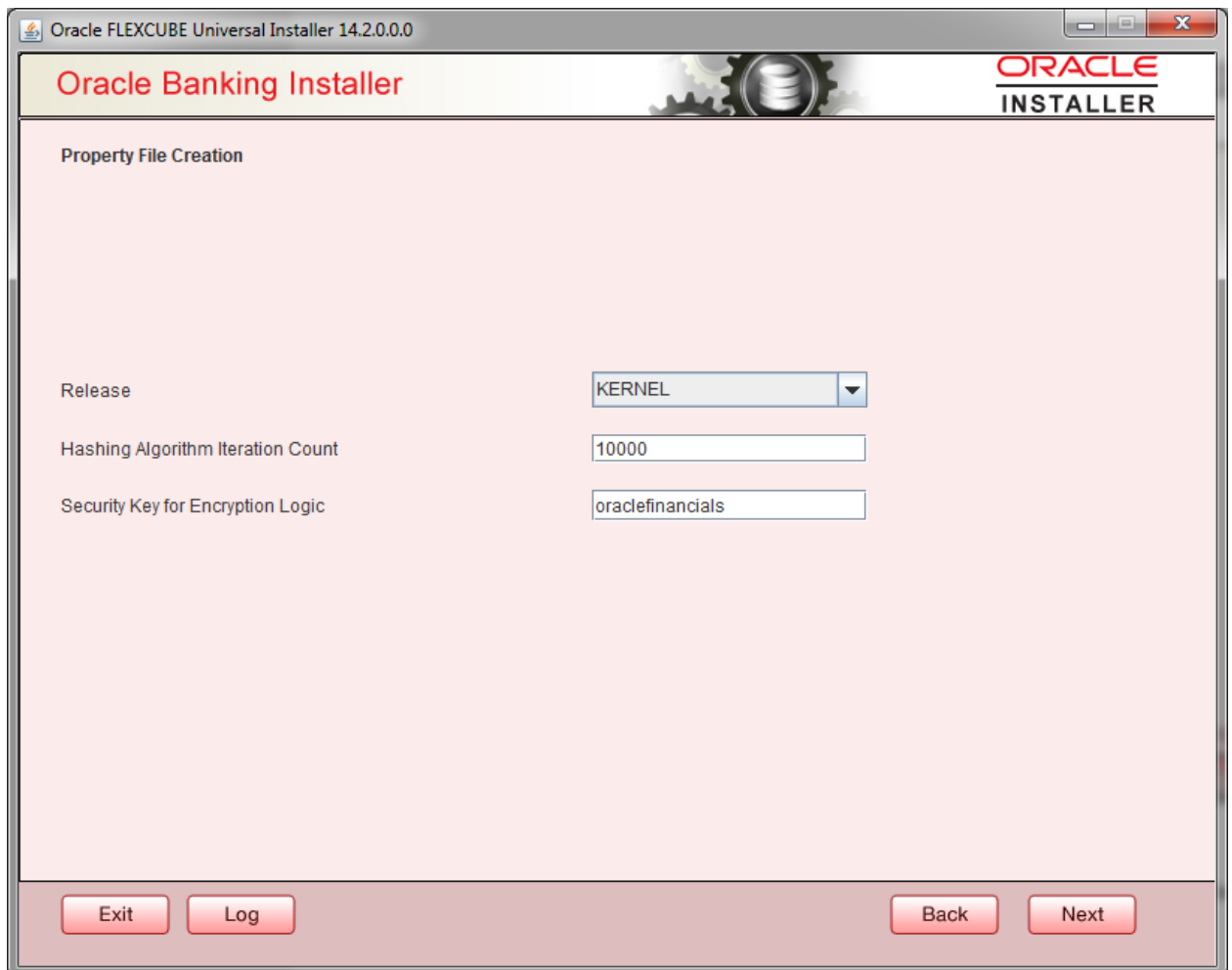
### **Application Server**

Specify the application server in which you are creating the property file. Select the appropriate one from the adjoining drop-down list.

### **Release**

Select the release from the adjoining drop down list.

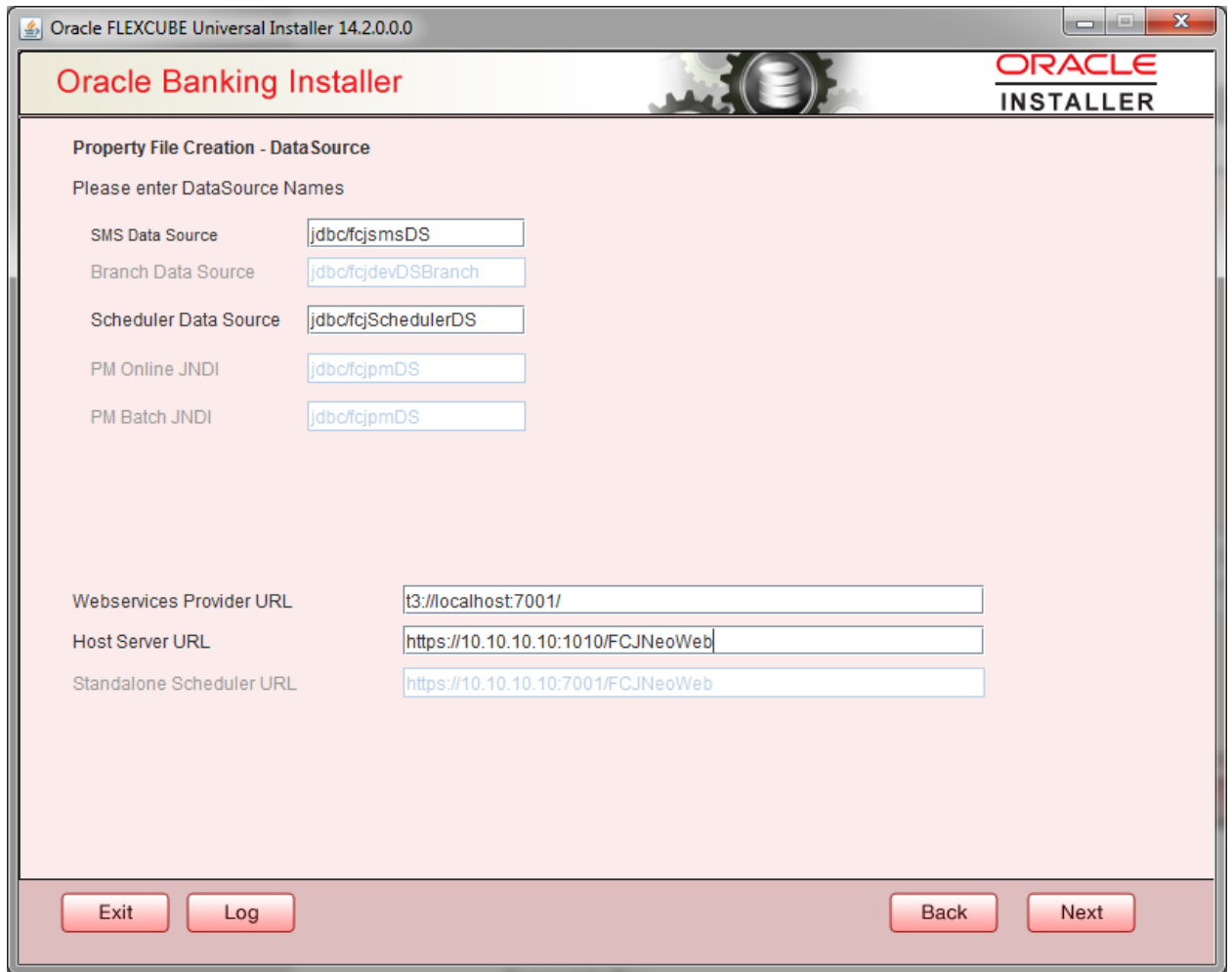
7. 'Security Key for Encryption Logic' is the key (exact 16 characters) for all encryption logic. By default is 'oraclefinancials'.



### 1.2.1 Configuring Scheduler

This section describes the method to configure scheduler data source.

1. System displays the following screen:



2. Specify the following details:

**Scheduler Datasource**

Specify the scheduler datasource which Oracle Banking Payments will access.

**Symmetric Key**

Specify the symmetric key for encryption.

**Scheduler Log Rotation Interval**

Specify the scheduler log rotation interval..

**BPEL Enable**

Specify the scheduler has BPEL enabled or not.

## ELCM Required

Specify the scheduler , ELCM is required or not.

### 1.2.2 Setting Common Properties

This section describes the process of setting common properties of Standalone Installer.

1. The installer displays the 'Common Properties' screen.

Oracle FLEXCUBE Universal Installer 14.2.0.0.0

### Oracle Banking Installer

ORACLE  
INSTALLER

Property File Creation - General Property

Debug Logs Required **Yes**  LOV Fetch Required

Work Area  Auto clear User **YES**

Signature Path

Excel Path

Request Time Out  milli seconds Max Image Size  Bytes

Connection Time Out  Seconds User Batch Time  Hours

Session Time Out  Seconds

CSS Style **Default** Name

Language **ENGLISH** ISO Code

Application Title

Version

CopyRights

Exit Log Back Next

2. Specify the following details:

#### Debug Logs Required

If you require debug option, select 'Yes' from the drop-down list. If you do not require debug option, select 'No'.



**Work Area**

Specify the work area.

For example: D:\BrnDbgs\

**Signature Path**

Specify the location at which the signature images are placed.

**Excel Path**

Specify the location at which the excel files are generated.

**Data Source**

Specify the JNDI location. The standard format is 'jdbc/fcjdevDS'.

**Request Time Out**

Specify the database request timeout value in milli seconds. This is the maximum number of seconds the database waits for a query to return the result.

**Connection Time Out**

Specify the database connection timeout value in seconds. This is the maximum number of seconds the application waits for a connection to the database to open.

**Session Time Out**

Enter the session time out value in seconds. This is the maximum number of seconds during which the application gets active without any user intervention. If there is no user intervention continuously for the duration specified here, the user session gets expire.

**LOV Fetch Required**

If you check this box, the option lists in Oracle Banking Payments displays the matching values based on the first characters that you enter in a field. If you specify the first three characters of a value to be entered in an option list and tab out, the system displays the complete list of values that are matching the first three characters.

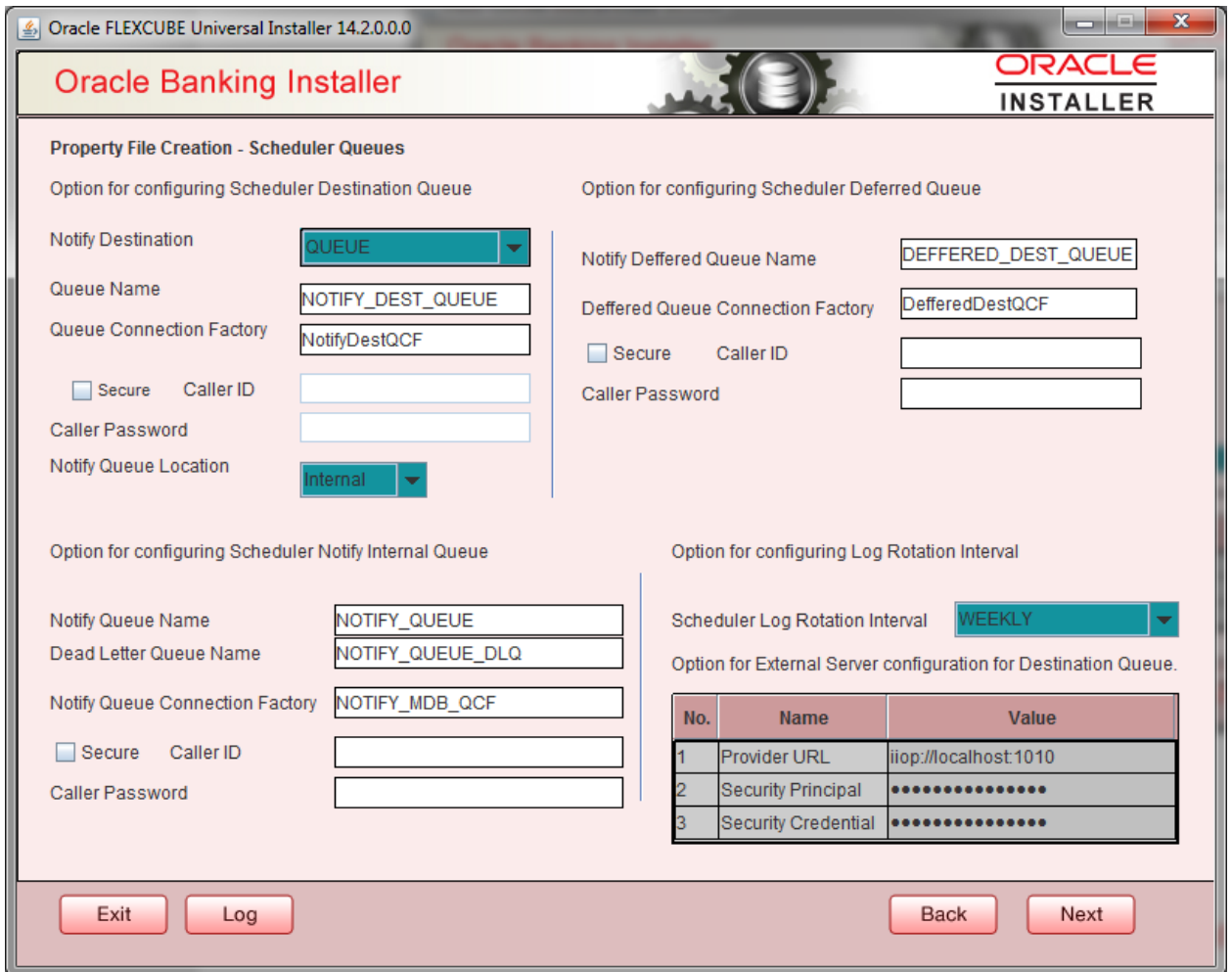
If you do not check this, option lists does not show the matching values based on the first few characters. You need to specify the complete value against the field.

Click 'Next' and the following screen is displayed:

**Scheduler Log Rotation Interval**

Select the interval between each rotation of scheduler log.

3. Click 'Next' and the following screen is displayed:



4. Specify the following details:

**Notify Destination**

Specify the notify destination. Select one of the following options:

- QUEUE
- TOPIC

**Queue Name**

Set 'NOTIFY\_DEST\_QUEUE' as the destination queue name.

**Queue Connection Factory**

Set 'NotifyDestTCF' as the queue connection factory.

## Secure

Check this box to indicate that it is a secured queue connection factory. If you check this box, you will be prompted to specify the caller ID and caller password as shown in the following screen.

The screenshot shows the Oracle Banking Installer window with the following configuration options:

- Property File Creation - Scheduler Queues**
  - Option for configuring Scheduler Destination Queue**
    - Notify Destination: QUEUE
    - Queue Name: NOTIFY\_DEST\_QUEUE
    - Queue Connection Factory: NotifyDestQCF
    - Secure
    - Caller ID: [text box]
    - Caller Password: [text box]
    - Notify Queue Location: Internal
  - Option for configuring Scheduler Deferred Queue**
    - Notify Deferred Queue Name: DEFERRED\_DEST\_QUEUE
    - Deferred Queue Connection Factory: DeferredDestQCF
    - Secure
    - Caller ID: [text box]
    - Caller Password: [text box]
- Option for configuring Scheduler Notify Internal Queue**
  - Notify Queue Name: NOTIFY\_QUEUE
  - Dead Letter Queue Name: NOTIFY\_QUEUE\_DLQ
  - Notify Queue Connection Factory: NOTIFY\_MDB\_QCF
  - Secure
  - Caller ID: [text box]
  - Caller Password: [text box]
- Option for configuring Log Rotation Interval**
  - Scheduler Log Rotation Interval: WEEKLY
- Option for External Server configuration for Destination Queue.**

No.	Name	Value
1	Provider URL	iiop://localhost:1010
2	Security Principal	.....
3	Security Credential	.....


Buttons at the bottom: Exit, Log, Back, Next.

## Caller ID

Specify the caller ID for the secured queue connection factory.

## Caller Password


Specify the password for the caller ID to access the secured queue connection factory.

 If the queue connection factory is not secured, i.e., if you have not checked the box 'Secure', the installer will not display the fields 'Caller ID' and 'Caller Password'. You need not provide these details in that case.

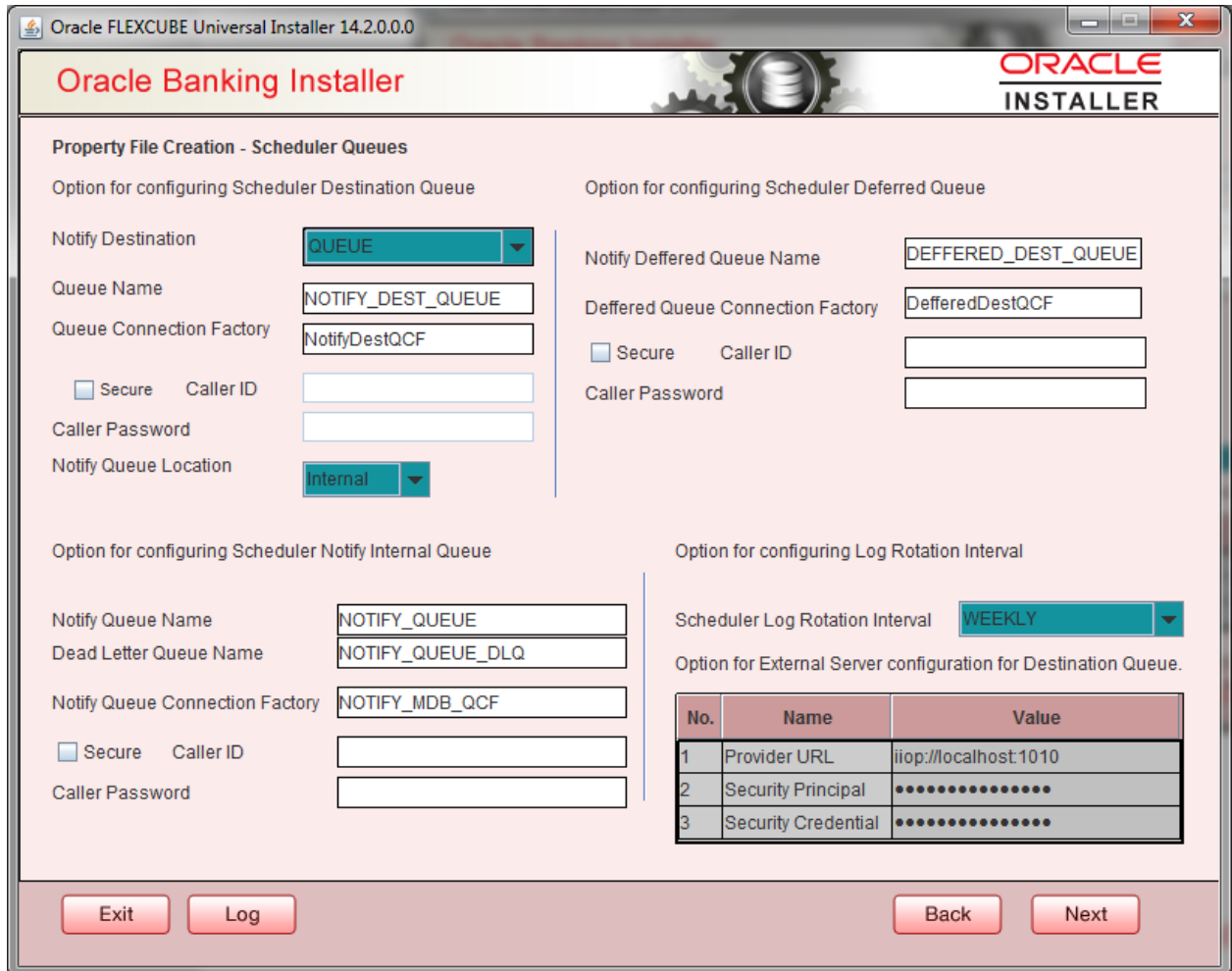
## Notify Queue Location

Specify the notify queue location. Select one of the following options:

- Internal
- External

 For Oracle WebLogic application server, the notify queue location should be selected as 'Internal'. If you choose 'Internal' as the 'Notify Queue Location', the screen provided in the following step does not get displayed. You will be navigated to next step where you can specify the notify deferred queue name and connection factory.

5. If you choose 'External', system displays the following screen:



The screenshot shows the Oracle Banking Installer window titled "Oracle FLEXCUBE Universal Installer 14.2.0.0.0". The main title is "Oracle Banking Installer" with the "ORACLE INSTALLER" logo in the top right. The screen is divided into several sections for configuring scheduler queues.

**Property File Creation - Scheduler Queues**

**Option for configuring Scheduler Destination Queue**

- Notify Destination: **QUEUE** (dropdown)
- Queue Name: **NOTIFY\_DEST\_QUEUE** (text box)
- Queue Connection Factory: **NotifyDestQCF** (text box)
- Secure
- Caller ID: (text box)
- Caller Password: (text box)
- Notify Queue Location: **Internal** (dropdown)

**Option for configuring Scheduler Deferred Queue**

- Notify Deferred Queue Name: **DEFERRED\_DEST\_QUEUE** (text box)
- Deferred Queue Connection Factory: **DeferredDestQCF** (text box)
- Secure
- Caller ID: (text box)
- Caller Password: (text box)

**Option for configuring Scheduler Notify Internal Queue**

- Notify Queue Name: **NOTIFY\_QUEUE** (text box)
- Dead Letter Queue Name: **NOTIFY\_QUEUE\_DLQ** (text box)
- Notify Queue Connection Factory: **NOTIFY\_MDB\_QCF** (text box)
- Secure
- Caller ID: (text box)
- Caller Password: (text box)

**Option for configuring Log Rotation Interval**

- Scheduler Log Rotation Interval: **WEEKLY** (dropdown)

**Option for External Server configuration for Destination Queue.**

No.	Name	Value
1	Provider URL	iiop://localhost:1010
2	Security Principal	.....
3	Security Credential	.....

Buttons at the bottom: Exit, Log, Back, Next.

6. Specify the following details of the external queue.

**Provider URL**

Specify the provide URL (iiop://localhost:1010).

1010 is the default IIOp port.

**Security Principal**

Specify the login ID to access the application server.

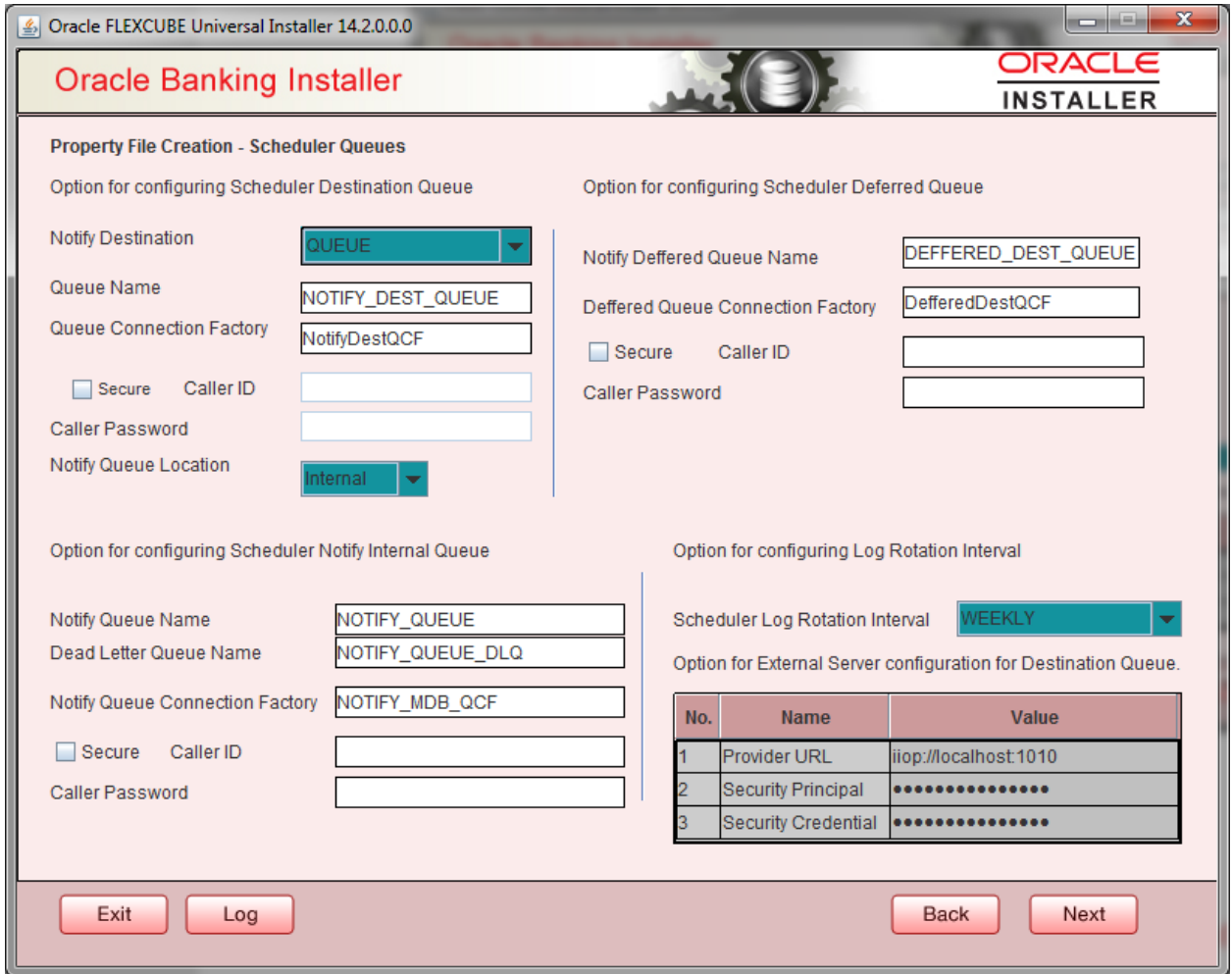
**Security Credentials**

Specify the password to access the application server.

7. Click 'Next' to proceed with scheduler configuration.



If you choose 'Internal' as the 'Notify Queue Location', you will be directly navigated to the following screen. In that case, the installer will not show the screen explained in the previous step.



8. Specify the following details:

**Notify Deferred Queue Name**

Set 'DEFERRED\_DEST\_QUEUE' as the notify differed queue name.

**Deferred Queue Connection Factory**

Set 'DeferredDestQcf' as the deferred queue connection factory.

**Secure**

Check this box to indicate that it is a secured deferred queue connection factory. If you check this box, you will be prompted to enter the caller ID and caller password as shown in the following screen.

9. Specify the caller ID and caller password for the secured deferred queue connection factory.

10. Click 'Next' and the following screen is displayed:

11. Specify the following details:

**Notify Queue Name**

Set 'NOTIFY\_QUEUE' as the notify queue name.

**Dead Letter Queue Name**

Set 'NOTIFY\_QUEUE\_DLQ' as the dead letter queue name.

**Notify Queue Connection Factory**

Set 'NOTIFY\_MDB\_QCF' as the notify queue connection factory.

**Secure**

Check this box to indicate that it is a secured queue connection factory. If you check this box, you will be prompted to enter the caller ID and caller password as shown in the following screen.

12. Specify the caller ID and caller password for the secured notify queue connection factory.

13. Click 'Next' and the following screen is displayed:

Specify the following details:

**Incoming Dead Letter Queue Name**

Set 'EMS\_QUEUE\_DLQ' as the incoming dead letter queue name.

**Incoming Backup Queue Name**

Set 'EMS\_QUEUE\_BACK' as the incoming backup queue name.

**Incoming Queue Connection Factory**

Set 'EmsQcf' as the incoming queue connection factory.

**Secure Incoming Queue Connection**

Check this box to indicate that it is a secured queue connection.

**Incoming Queue Caller ID**

Specify the caller ID for the secured queue connection.

**Incoming Queue Caller Password**

Specify the caller password for the secured queue connection.

**Outgoing Dead Letter Queue Name**

Set 'EMS\_QUEUE\_DLQ' as outgoing dead letter queue name.

**Outgoing Queue Connection Factory**

Set 'EmsQcf' as the outgoing queue connection factory.

**Secure Outgoing Queue Connection**

Check this box to indicate that it is a secured outgoing queue connection.

**Outgoing Queue Caller ID**

Specify the caller ID for the secured queue connection.

**Outgoing Queue Caller Password**

Specify the caller Password for the secured queue connection.

**Outgoing Queue Provider URL**

Specify the URL of the outgoing queue.

**Queue Principal**

Specify the queue principal.

**Queue Credential**

Specify the queue credential.

**Incoming Queue Name**

Specify the incoming queue name.

**Outgoing Queue Name**

Specify the outgoing queue name.

**SFMS Incoming Queue**

Specify the SFMS Incoming Queue.

**RTGS Incoming Queue**

Specify the RTGS incoming Queue.

Once you have specified the above details, click 'Next' and system displays the next screen.



### 1.2.3 Setting EMS Properties

You will be navigated to the 'Scheduler EMS Properties' screen. Here, you need to set the EMS details.

1. Set the EMS properties:

No.	Name	Value
1	Incoming Dead Letter Queue Name	EMS_QUEUE_DLQ
2	Incoming backup Queue Name	EMS_QUEUE_BACK
3	Incoming Queue Connection Factory	EmsQcf
4	Secure Incoming Queue Connection	<input type="checkbox"/>
5	Incoming Queue Caller Id	
6	Incoming Queue Caller Password	
7	Outgoing Dead Letter Queue Name	EMS_QUEUE_DLQ
8	Outgoing Queue Connection Factory	EmsQcf
9	Secure Outgoing Queue Connection	<input type="checkbox"/>
10	Outgoing Queue Caller Id	
11	Outgoing Queue Caller Password	
12	Outgoing Queue Provider URL	t3://10.10.10.10:1010
13	Queue Principal	*****
14	Queue Credential	*****
15	Incoming Queue Name	EMS_INQUEUE
16	Outgoing Queue Name	EMS_OUTQUEUE
17	SFMS Incoming Queue	SFMS_INQUEUE
18	RTGS Incoming Queue	RTGS_INQUEUE
19	EMS Bulker Queue	BULKER_QUEUE

2. Specify the following details:

#### OutGoing Connection Factory

Specify the name of the outgoing connection factory to which EMS listens. You need to create this connection factory at the application server.

For details on connection factory creation, follow the steps described for creation of notify connection factories.

### **Incoming Connection Factory**

Specify the name of the incoming connection factory to which EMS listens. You need to create this connection factory at the application server.

For details on connection factory creation, follow the steps described for creation of notify connection factories.

### **Outgoing Queue Name**

Specify the name of the outgoing queue for which EMS is configured. By default, this is set as 'NOTIFY\_QUEUE\_DLQ'.

### **Incoming Queue Name**

Specify the name of the incoming queue for which EMS is configured. By default, this is set as 'NOTIFY\_QUEUE\_DLQ'.

### **Incoming Backup Queue Name**

Specify the name of the incoming backup queue for which EMS is configured.

### **Outgoing Queue Provider URL**

In case EMS OUT MDB is to be configured to queue, you need to specify the URL for outgoing provider based on the application server. By default, the Installer displays the outgoing queue provider URL for Oracle WebLogic.

This value is application server dependent.

The details of Outgoing Queue Provider URL to be used for different application servers are given below:

<b>Application Server</b>	<b>EMS Out Initial Context Factory</b>
Oracle WebLogic	t3://<ip_adress>:port E.g.: t3://10.10.10.10:1010 Here, 10.10.10.10 represents the local host and 1010 to the target server default port (AdminServer/ManagedServer).
IBM WebSphere	iiop://<ip_adress>:port E.g.: iiop://10.10.10.10:1010 Here, 1010 represents the default iiop port

### **Queue Principal**

If EMS OUT MDB has to be configured to queue, you need to specify the EMS out queue principal. This is the user name for the application server in which the queue is configured.

## Queue Credential

If EMS OUT MDB has to be configured to queue, you need to specify the EMS out queue credential. This is the password for the above user name created for application server in which the queue configured.

3. Once you have specified the above details, click 'Next' and the following screen is displayed:

Oracle FLEXCUBE Universal Installer 14.2.0.0.0

### Oracle Banking Installer

ORACLE  
INSTALLER

Property file Creation - EMS FTP/FTPS  
Option for Scheduler EMS FTP/FTPS configuration

No.	Name	Value
1	File TransferMode FTPS	FTPS
2	Server	10.10.10.10
3	User id	OFSS
4	Password	*****
5	KnownHost file local folder path	/mnt/ems/SFTP/
6	KnownHost file server folder path	/mnt/ems/SFTP/
7	File Type	.txt
8	SWIFT Format	1
9	SWIFT Message Delimiter	<input checked="" type="checkbox"/>
10	SWIFT Message Terminator	<input checked="" type="checkbox"/>
11	MEDIA	SWIFT

Option for EMS -Structured Financial Messaging System configuration

No.	Name	Value
1	Signature Block	<input checked="" type="checkbox"/>
2	Keystore File Name	/keystore
3	Keystore Alias name	*****
4	Keystore Password	*****

Exit Log Back Next

4. Specify the following details:

### File Transfer Mode FTPS

Specify the mode of transferring files to EMS. Select one of the following:

- FTPS
- SFTP
- HTTP

**Server**

Specify the server IP address for the selected file transfer mode.

**User ID**

Specify the user ID to access the server of the file transfer mode.

**Password**

Specify the password to for the above user ID.

**File Type**

Specify the type of file that is transferred. By default, the Installer sets it as '.txt'.

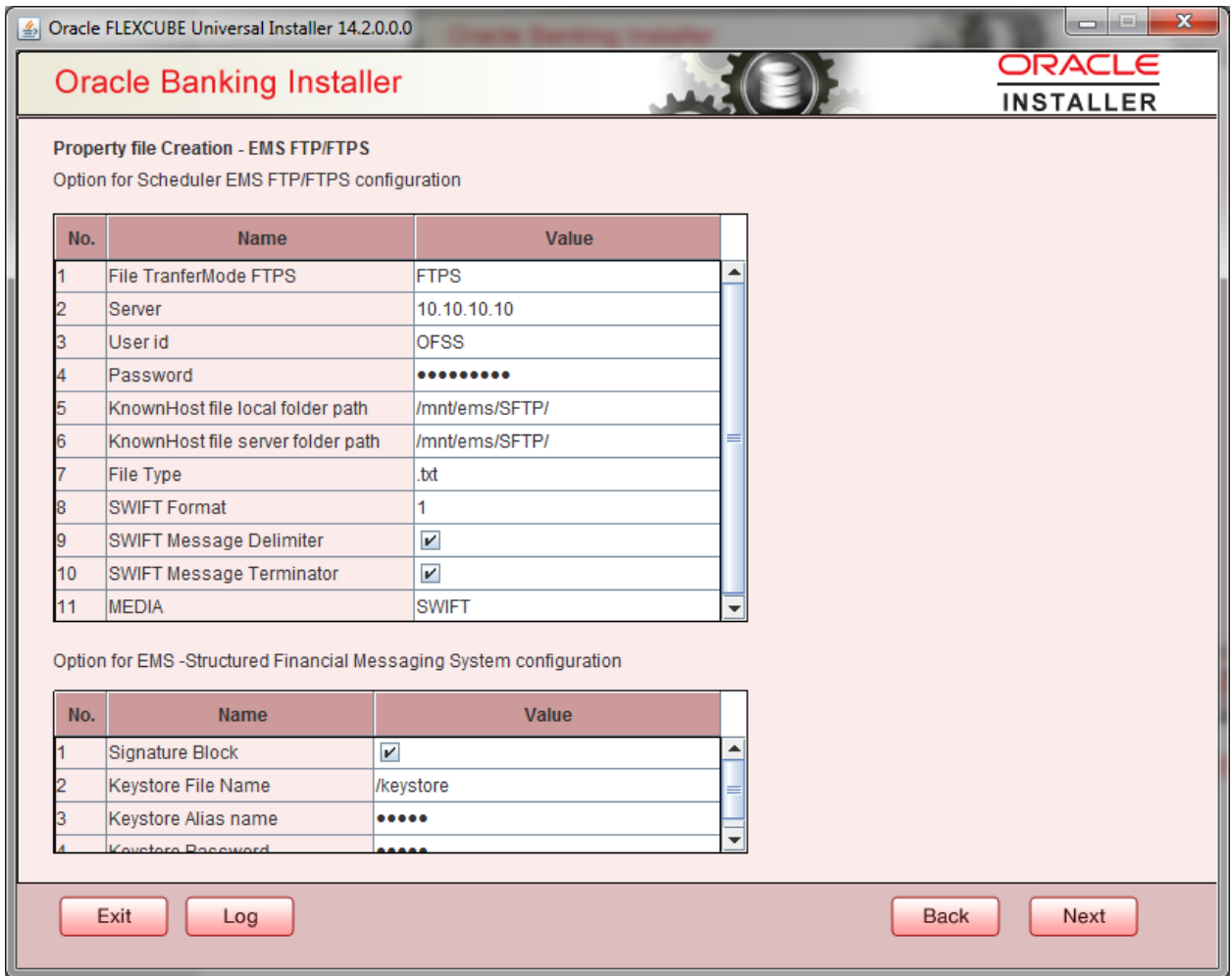
**SWIFT Message Delimiter**

Specify the character which is used as the message delimiter.

**SWIFT Message Terminator**

Specify the character which is used as the message terminator.

5. Once you have specified the above details, click 'Next'. and the following screen is displayed:



6. Specify the following details:

**Signature Block**

Check this box to enable signature block.

**Keystore File Name**

Specify the keystore file name.

**Keystore Alias Name**

Specify the keystore alias name.

**Keystore Password**

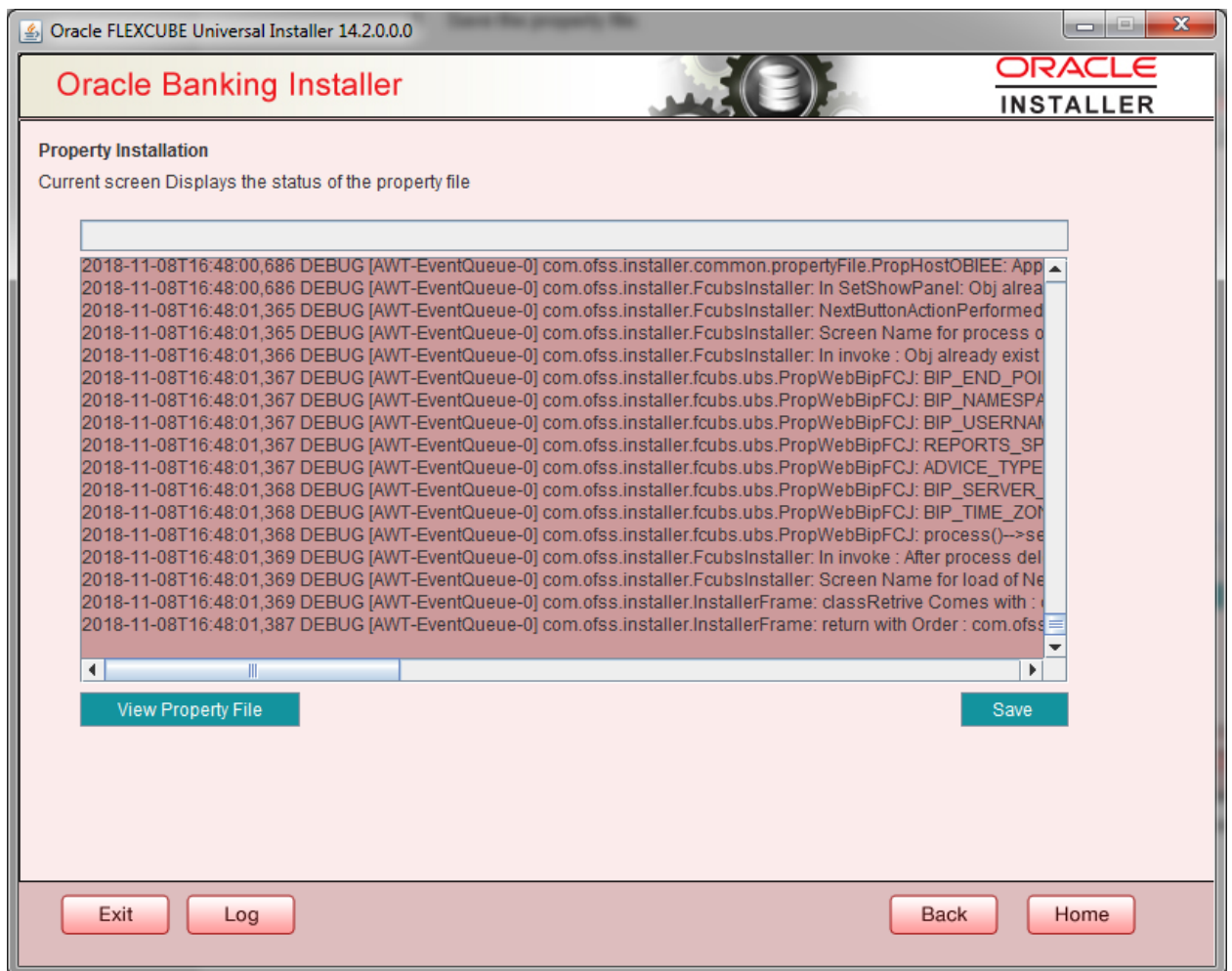
Specify the keystore password.

7. Once you have specified the above details, click 'Next' and system displays the next screen.

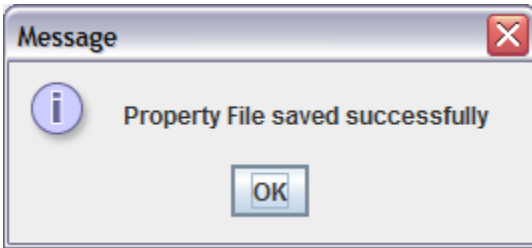
## 1.2.4 Saving Property File

After completing all the required settings explained above, you need to save the property file.

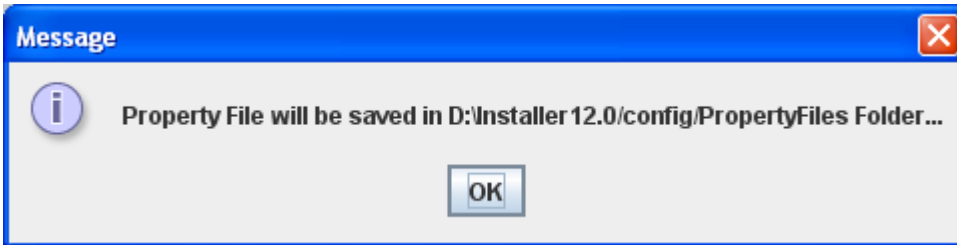
1. Save the property file.



2. You can view the status of property file creation in the above screen. Once the file is saved, the installer displays the following message:



3. If you do not use the 'Save' or Save As' buttons, the installer will save the properties file in '<InstallerSources>\config\PropertyFiles' folder. In that case, you will see the message below.



This completes the properties file creation.



Standalone Scheduler Property File Creation  
[May] [2019]  
Version 14.3.0.0.0

Oracle Financial Services Software Limited  
Oracle Park  
Off Western Express Highway  
Goregaon (East)  
Mumbai, Maharashtra 400 063  
India

Worldwide Inquiries:  
Phone: +91 22 6718 3000  
Fax: +91 22 6718 3001  
[www.oracle.com/financialservices/](http://www.oracle.com/financialservices/)

Copyright © 2017,2019 Oracle and/or its affiliates. All rights reserved.

Oracle and Java are registered trademarks of Oracle and/or its affiliates. Other names may be trademarks of their respective owners.

**U.S. GOVERNMENT END USERS:** Oracle programs, including any operating system, integrated software, any programs installed on the hardware, and/or documentation, delivered to U.S. Government end users are "commercial computer software" pursuant to the applicable Federal Acquisition Regulation and agency-specific supplemental regulations. As such, use, duplication, disclosure, modification, and adaptation of the programs, including any operating system, integrated software, any programs installed on the hardware, and/or documentation, shall be subject to license terms and license restrictions applicable to the programs. No other rights are granted to the U.S. Government.

This software or hardware is developed for general use in a variety of information management applications. It is not developed or intended for use in any inherently dangerous applications, including applications that may create a risk of personal injury. If you use this software or hardware in dangerous applications, then you shall be responsible to take all appropriate failsafe, backup, redundancy, and other measures to ensure its safe use. Oracle Corporation and its affiliates disclaim any liability for any damages caused by use of this software or hardware in dangerous applications.

This software and related documentation are provided under a license agreement containing restrictions on use and disclosure and are protected by intellectual property laws. Except as expressly permitted in your license agreement or allowed by law, you may not use, copy, reproduce, translate, broadcast, modify, license, transmit, distribute, exhibit, perform, publish or display any part, in any form, or by any means. Reverse engineering, disassembly, or decompilation of this software, unless required by law for interoperability, is prohibited.

The information contained herein is subject to change without notice and is not warranted to be error-free. If you find any errors, please report them to us in writing.

This software or hardware and documentation may provide access to or information on content, products and services from third parties. Oracle Corporation and its affiliates are not responsible for and expressly disclaim all warranties of any kind with respect to third-party content, products, and services. Oracle Corporation and its affiliates will not be responsible for any loss, costs, or damages incurred due to your access to or use of third-party content, products, or services.